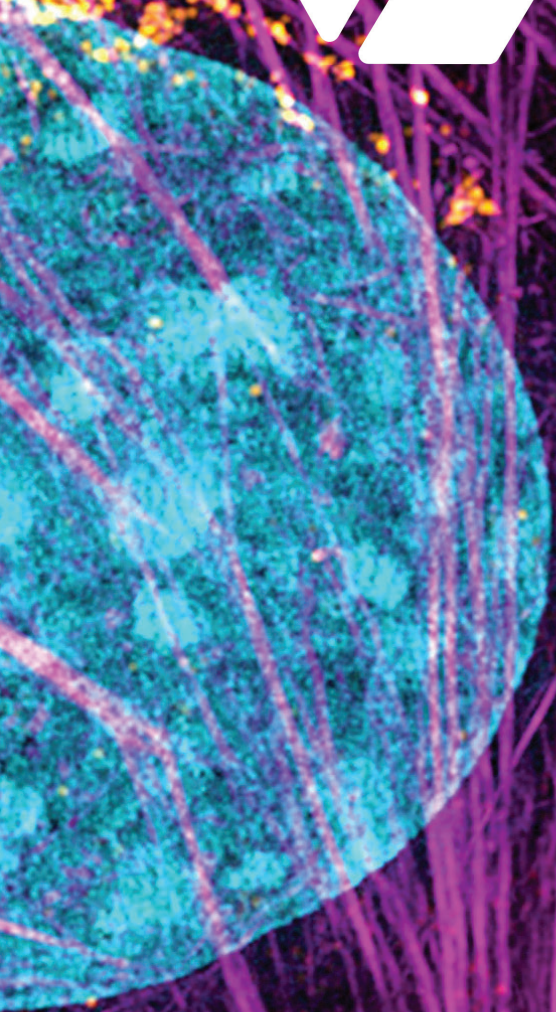




bertin
alpao



MICROSCOPY

From the stars to the cells

Born in Astronomy, Adaptive Optics has found its way into several new fields in recent years, helping to achieve earth-shattering discoveries in each one of them.

Microscopy has a vast array of imaging methods. Ever since Adaptive Optics adoption in the field, it has proven to be a crucial component helping biologists to look deep and neatly into the building blocks of life.

**Visualizing in depth
3D samples**

Confocal
Light-Sheet

**Imaging
deep tissue**

Multi-Photon
Z-Scanning

**Observing
in vivo specimens**

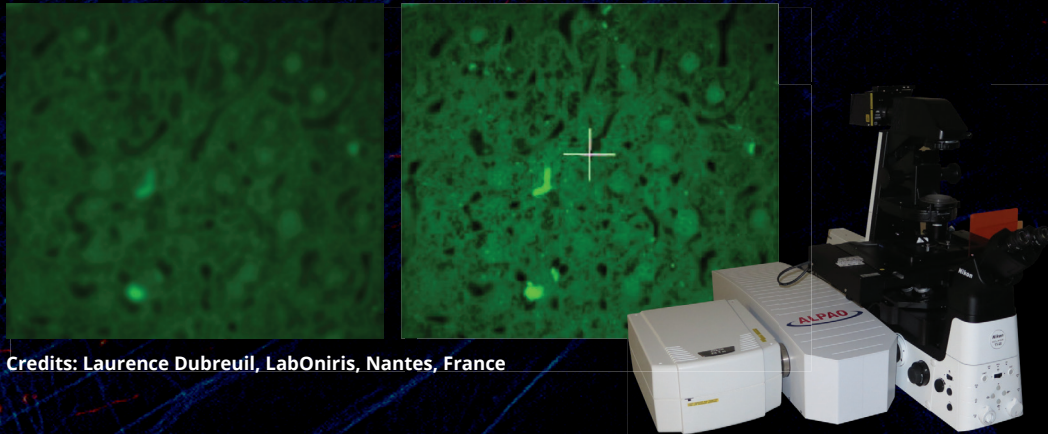
SIM
Widefield

**Super
Resolution**

STORM PAINT
STED PALM

“In any application where you must study deep inside a specimen, an in vivo specimen or a clarified specimen, you must correct for optical aberrations. Without Adaptive Optics, we wouldn’t have been able to study several samples while keeping them in their natural habitat and still getting images as close as possible to the ideal situation.”

Antoine Delon, Researcher at LiPhy and Institute for Advanced Biosciences of Grenoble



Credits: Laurence Dubreuil, LabOniris, Nantes, France

ConfoBright

“By using Adaptive Optics we can restore the performance of microscopes to the optimal, that is to the limits imposed by physics. Even though the specimen distorts the light, we can still recover the best images and hence the best scientific information out of those microscopes.”

Martin Booth, Professor of Engineering Science at University of Oxford



Credits: Betzig Lab, Janelia Farm, HHMI

DM 97-15

SH-CMOS

Bertin AlpaO Microscopy related products

Deformable Mirrors

DM 57*
DM 69*
DM 97*

Shack-Hartmann Wavefront Sensors

SH-EMCCD
SH InGaAs
SH-InGaAs fast

SH-CMOS
SH-sCMOS

SH-sCMOS UV ext.

Software Control

ALPAO Core Engine

*Pitch options available: 0.8 mm, 1.5 mm, 2.5 mm and 5.0 mm



727, rue Aristide Berges
38330 Montbonnot - France

www.alpao.com
marketing.alpao@bertin.group

Find us also on

